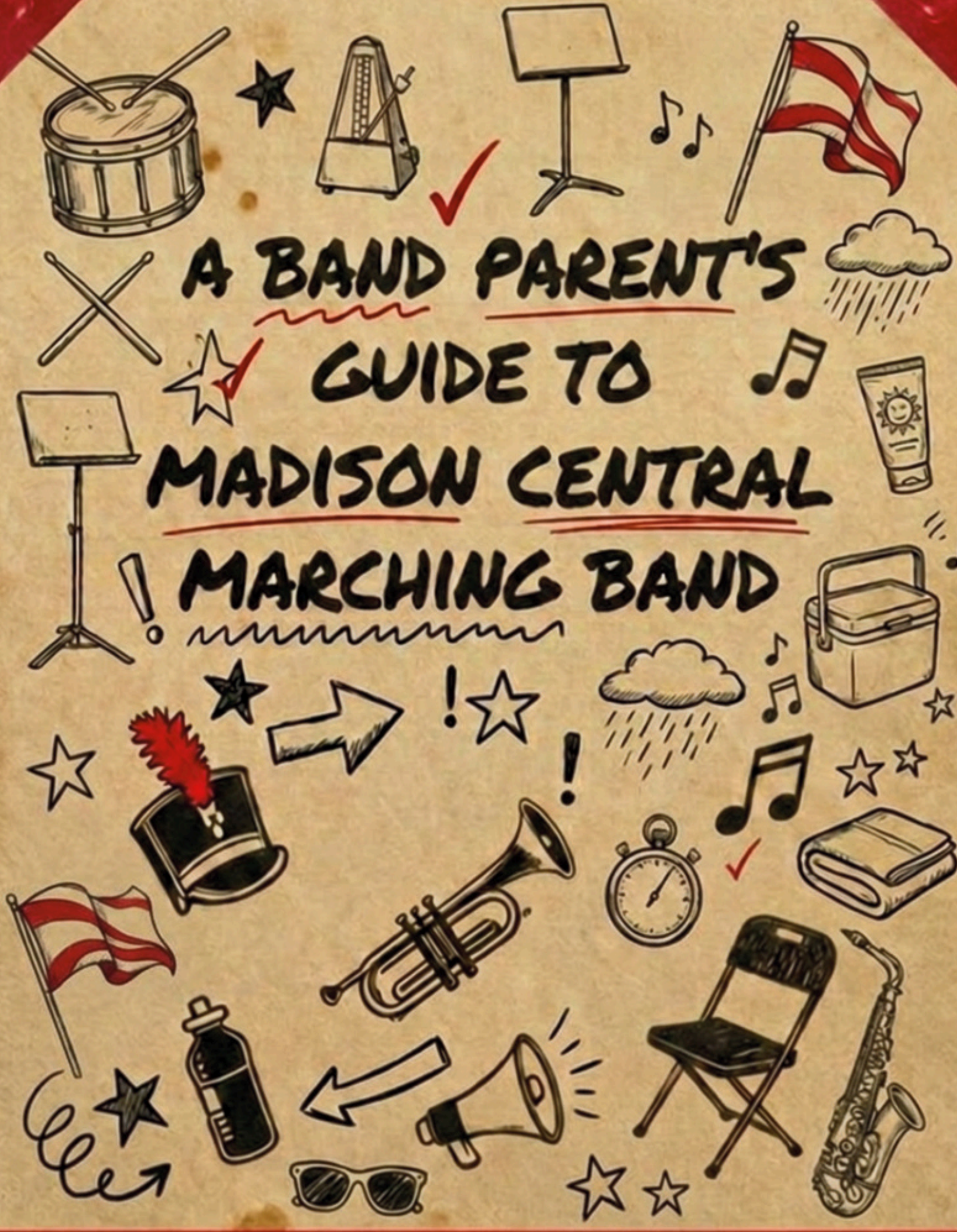


A BAND PARENT'S  
GUIDE TO  
MADISON CENTRAL

MARCHING BAND



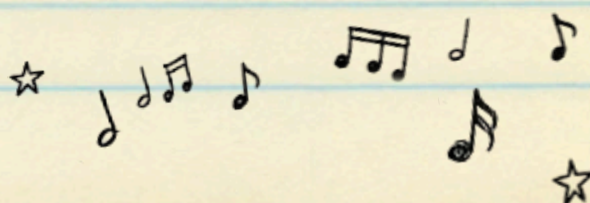
# TABLE OF CONTENTS

*your guide to the guide*

LETTERS OF INTRODUCTION	2
KNOW YOUR BAND	3
BAND BOOSTERS	4
HOW WE COMMUNICATE	5
FINANCIAL COMMITMENT	6
BAND CAMP SURVIVAL GUIDE	7-8
COMPETITIONS + GAME DAYS	9-10
UNIFORMS + STUDENT HEALTH	11-12
VOLUNTEERING	13-14
FUNDRAISING	15-16
BAND GLOSSARY	17-18
QUICK REFERENCE	BACK COVER

---

*Keep this guide handy – especially the back cover.  
You'll reference it more than you think.*



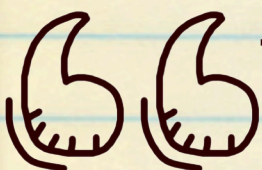
# FROM THE DIRECTOR

Welcome to the 2026 marching band season and the Madison Central Band Family. In order to build and foster a strong and competitive program we need your help. Together we continue to expand on the legacy and reputation that already surrounds our championship award winning program.

Thank you for making this commitment to the Madison Central Marching Band. Our staff is here to help and educate with passion and creativity. We care deeply about using music education as a vehicle to provide students the opportunity to grow artistically and emotionally, and we are glad to have you in the band family.

*~David Jaggie,*  
Director of Bands

# From the Booster President



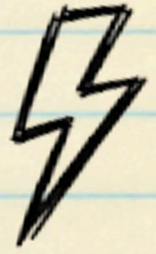
The most important advice I can give new band families is to get involved in any way you can — even if it doesn't feel like much. These kids are so thankful for you to show up, donate snacks, help serve, push props, or just cheer LOUDLY at competitions. Please don't hesitate to reach out if you have any questions. It takes a village and a whole lot of time and effort to run a band this size, and we're so honored to be building this village with you.

*— Julia Harper* 

# KNOW YOUR BAND

Fall

## Marching Band



Competing on fields across Kentucky — our flagship ensemble with 6 state championships.



Winter

## Winter Guard



Indoor color guard (flag, rifle, sabre) competing in the Tri-State Marching Arts circuit.



Spring

## Concert Band

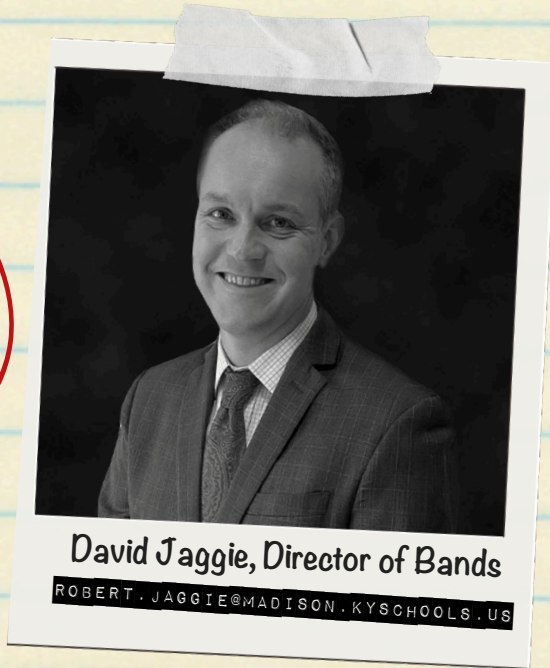
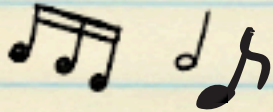


Performing the finest in concert literature at festivals and events.



# Your Directors

6x  
State  
Champions



David Jaggie, Director of Bands

ROBERT.JAGGIE@MADISON.KYSCHOOLS.US



Jeremiah Fowler, Associate Director

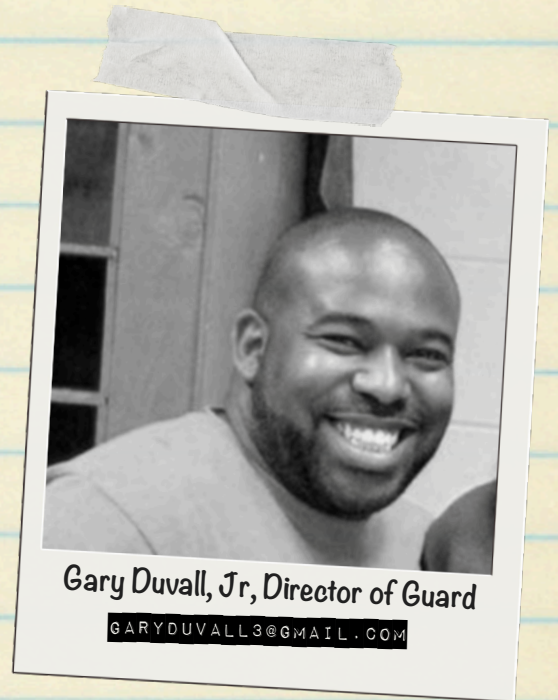
JEREMIAH.FOWLER@MADISON.KYSCHOOLS.US

27  
Finals  
Appearances



Audrey Worrell, Assistant Director

AUDREY.WORRELL@MADISON.KYSCHOOLS.US



Gary Duvall, Jr, Director of Guard

GARYDUVALL3@GMAIL.COM



70+  
years of  
excellence



# YOUR BAND BOOSTER OFFICERS

*These are your people – be sure to say hi!*



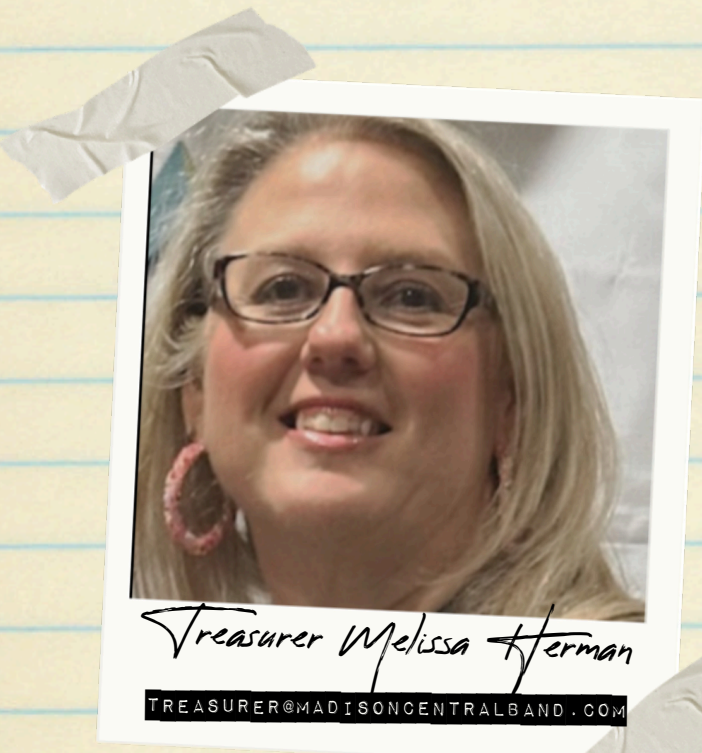
*President Julia Harper*

PRESIDENT@MADISONCENTRALBAND.COM



*Vice President Jessica Smith*

VICEPRESIDENT@MADISONCENTRALBAND.COM



*Treasurer Melissa Herman*

TREASURER@MADISONCENTRALBAND.COM



*Secretary Michelle Stubbs*

SECRETARY@MADISONCENTRALBAND.COM

# COMMITTEE LEADS



## OPERATIONS

Jessica Cobb  
CHAPERONE CHAIR  
chaperones@madisoncentralband.com

Jen Deaton  
PROPS CHAIR  
props@madisoncentralband.com

Joe Francis  
TRANSPORTATION CHAIR  
transportation@madisoncentralband.com

David Deaton  
UNIFORMS CHAIR  
uniforms@madisoncentralband.com

Natalie Smith  
FIELD CREW COORDINATOR  
fieldcrew@madisoncentralband.com

-open-  
HEALTH + WELLNESS CHAIR  
wellness@madisoncentralband.com

## FUNDRAISING + HOSPITALITY

Sarah Roof  
FUNDRAISING CO-CHAIR  
fundraising@madisoncentralband.com

Rachel Hooker  
FUNDRAISING CO-CHAIR  
fundraising@madisoncentralband.com

Brandi Wehrly  
FEED THE BAND CHAIR  
feedtheband@madisoncentralband.com

Andrea Stamm  
DINING FOR DOLLARS COORDINATOR  
d4d@madisoncentralband.com

## SYSTEMS + COMMUNICATIONS

Missy Bryant  
COMMUNICATIONS CHAIR  
socialmedia@madisoncentralband.com

Garett Harper  
TRANSFORMATION CHAIR  
support@madisoncentralband.com

-open-  
PHOTOGRAPHY LEAD  
photos@madisoncentralband.com

want to help?  
we're always looking for  
volunteers in every area!

[madisoncentralband.com/  
get-involved/volunteer](http://madisoncentralband.com/get-involved/volunteer)



it takes a village



# HOW WE COMMUNICATE



## THE BAND APP

Your most up-to-date source. Directors and booster leadership post important information here first – before anywhere else.

[band.us](https://band.us) · download the Band app and join our group



## THE WEBSITE

Home base for reference info – schedules, calendar, forms, and fundraising details. Will lag behind the app for news.

[madisoncentralband.com](https://madisoncentralband.com)



## PRESTO ASSISTANT

Accounts, payments, forms, and rosters. Every band family needs an account.

[app.presto-assistant.com](https://app.presto-assistant.com) · Org Code: *mchs\_band*



## SOCIAL MEDIA

Photos, announcements, and competition day updates. Will lag behind the app.

Facebook: [@MCIndianBand](https://www.facebook.com/MCIndianBand) · Instagram: [@mcindianband](https://www.instagram.com/mcindianband)



## EMAIL

For private questions or concerns, reach out directly:

[ask@madisoncentralband.com](mailto:ask@madisoncentralband.com) – general questions for booster leadership  
[treasurer@madisoncentralband.com](mailto:treasurer@madisoncentralband.com) – payment and account questions

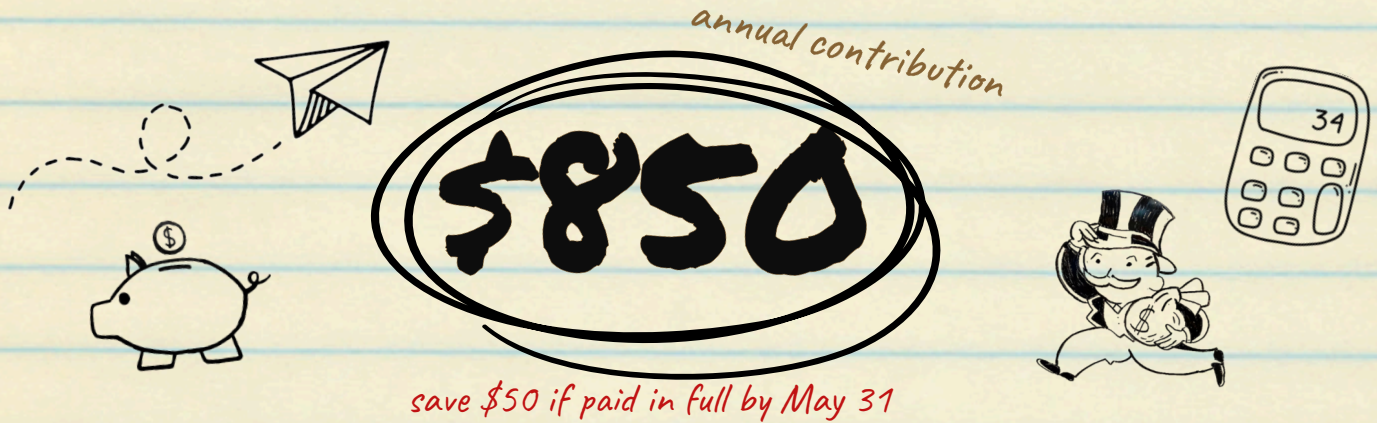
## RULE OF THUMB

The Band app is your best bet for fast answers – post your question there and someone find the answer. For anything private, email [ask@madisoncentralband.com](mailto:ask@madisoncentralband.com) or [treasurer@madisoncentralband.com](mailto:treasurer@madisoncentralband.com) directly.

The band directors and staff are focused on the kids – logistics questions go to the booster network.

# Financial Commitment

Marching band receives very little school funding – which surprises most new families. The cost is shared through an annual contribution, supported by fundraising and sponsorships

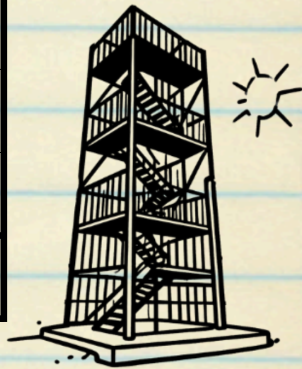


## COVERS

- ✓ Uniforms
- ✓ Band Camp
- ✓ Competition Lodging & Meals
- ✓ Transportation
- ✓ Equipment
- ✓ Competition Entry & BOA fees

## PAYMENT SCHEDULE

PAYMENT	DUE DATE	PURPOSE	AMOUNT
Payment 1	May 30	Uniforms	\$250
Payment 2	July 1	Band Camp	\$200
Payment 3	Aug 1	Equipment	\$200
Payment 4	Sept 1	Competition/BOA	\$100
Payment 5	Oct 1	Competition/State	\$100
<b>TOTAL</b>			<b>\$850</b>



\*Sibling discount: Student 1: \$850 · Student 2: \$425 · Student 3: \$850

### NO STUDENT IS TURNED AWAY

If the payment schedule doesn't work for your family, assistance is available- and handled in complete confidentiality.

[madisoncentralband.com/families/contribution-commitment](http://madisoncentralband.com/families/contribution-commitment)

# BAND CAMP



## SURVIVAL GUIDE

Three weeks of hard work, music, and memories that form the foundation of everything the marching band does. Students learn the show music, drill fundamentals, and – most importantly – each other.

### ATTENDANCE IS MANDATORY

Every absence leaves a gap in drill that affects everyone around your student. Submit an Absence Request Form at least one week in advance.



## 2026 Band Camp Schedule

### WEEK 1 – JULY 13-17

Mon · Tue · Thu

- Musicians: 9:00am – 4:00pm
- Color Guard: 1:00pm – 8:00pm

Wed · Fri

- Full Ensemble: 9:00am – 4:00pm

### WEEK 2 – JULY 20-24

Mon · Wed · Fri

- Full Ensemble: 9:00am – 5:00pm

Tue · Thu

- Full Ensemble: 9:00am – 9:00pm

### WEEK 3 – JULY 27-31

Mon · Wed

- Full Ensemble: 9:00am – 5:00pm

Tue · Thu

- Full Ensemble: 9:00am – 9:00pm

Fri ☆ **End of Camp BBQ**

- Full Ensemble: 9:00am – 8:30pm

### LOCATION

**Purple Lot** – across 2nd Street near Daniel Boone Elementary. Loop through the DBE parking lot for drop-off/pickup

### MEALS

- Lunch provided in Daniel Boone cafe
- Parent may dropoff food at lunch, but students won't be allowed off-campus to get food
- Dinner provided on the 9pm nights

### End of Camp BBQ – Friday, July 31

This one's for YOU, band family! Come meet booster leadership, learn how the season works, where you can help and stay for the final performance of camp – your first look at what three weeks of hard work looks like on the field. Hot dogs provided!



# WHAT TO BRING

## EVERY DAY

- Insulated water jug (½- 1 gal.)
- Sunscreen - apply before, reapply at lunch
- Cooling towel
- Hat and sunglasses
- Instrument + reeds and supplies
- Nutritious snacks
- Deodorant
- Broken-in athletic shoes with support
- Hair ties or scrunchies
- A positive attitude 😊

## WHAT TO WEAR

- Light, loose, breathable clothing
- NOT jeans**
- White or light-colored t-shirt
- Athletic shorts
- Socks + athletic shoes
- No sandals**



## HOW TO PREPARE BEFORE CAMP

- ✓ Dust off your instrument – play a little each day
- ✓ Start drinking more water now
- ✓ Take some walks – even short ones build endurance
- ✓ Break in your shoes – blisters on day one are no fun

- ✓ Spend time outside – help your body adjust to the heat
- ✓ Eat a good breakfast – protein, not just Pop-Tarts
- ✓ Get some sleep – camp is way easier when you're rested

## ABSENCE POLICY

### ✓ EXCUSED

- Death in immediate family
- Serious illness or injury (*doctor's note required*)
- Extenuating circumstances (*handled individually by director*)

### X UNEXCUSED

- Medical/dental appointments
- Homework
- Concerts, sporting events
- Work
- Senior pictures



## CONSEQUENCES

### 1ST UNEXCUSED ABSENCE

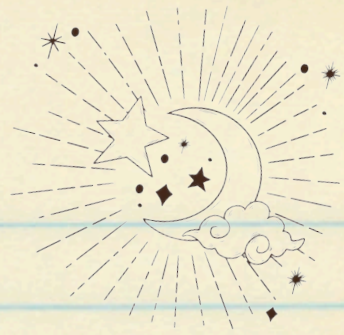
- Loss of privilege to perform in the next competition

### 2ND UNEXCUSED ABSENCE

- **DISMISSAL FROM THE PROGRAM**

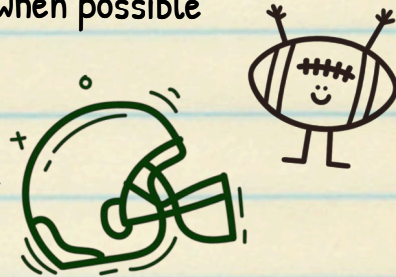


# Performances



## GAME DAYS + PARADES + COMMUNITY SHOWS

- Pep Band supports the football team during home games, \*when possible
- Band participates in the Tomahawk Walk before games
- Marching Band often performs during half-time
- Pep Band is typically released at the end of the 3rd quarter
- Start times will be posted in the Band App



*\* Game support may be cancelled for weather or if the next day is a competition day*

Marching band will participate in Homecoming and Christmas parades

*- Get to Main Street early for the best spot!*

& TWO community shows

- a fundraiser in September where we unveil the season's show shirt
- and "One Last Run" - an emotional night celebrating our senior's final performance at MCHS

## COMPETITIONS

- We have 5 competitions this year- always on a Saturday
- Competition days are long! Dismissal can be late — sometimes well past midnight!
- Bands usually perform twice- in Semi-Finals and Finals
- Boosters provide meals at competitions and the kids get downtime between rounds
- Admission is required for all competitions *Bring your wallets!*



Madison Southern  
Classic

SEPT 12



Lafayette  
Invitational

SEPT 19



Louisville

OCT 3



GRC  
Invitational\*

OCT 17

*\*Subject to change*



State Finals  
@ ECU

OCT 31

# Cheer Your Marching Band Like A Pro

- Get there early. Better seats go fast — aim for the 50-yard line, as high as you can get.
  - You can't take your seat during a performance. Most venues won't let you take your seat until a band finishes. Plan your trips to the concession stand between bands.
  - Cheer your heart out — but read the room. Big moments deserve big noise. Quiet passages deserve quiet.
  - Keep conversation for between performances. Everyone around you came to hear the music. So did you.
  - Applaud every. single. band. Every band on that field worked as hard as ours. We're one big band family!
  - Watch what you say — and what you post. The parent sitting next to you might be from that other band. Keep it kind, in the stands and on social media.
  - Leave the umbrella at home. It blocks the view of everyone behind you and can be dangerous in packed stadiums. Bring a poncho instead.
  - Skip the air horn. This is a competition, not a football game. Your voice is the best noisemaker you've got.
  - Buy a program and hit the concession stand. The program helps you understand the scoring. The concession sales often fund the host band's entire season — pay it forward.
- **SHOW UP. THEY KNOW WHEN YOU'RE THERE. IT MATTERS MORE THAN YOU THINK**

## COMPETITION DAY PACKING LIST



STADIUM SEAT OR  
CUSHION



PERSONAL FAN



FULL CHARGE +  
PORTABLE CHARGER



SUNSCREEN



CASH

Show up loud,  
stand up proud,  
and rep your band  
with pride!



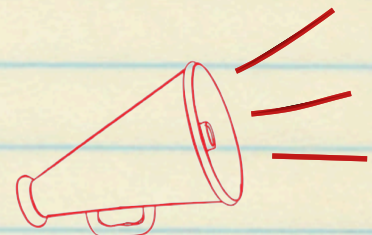
WEAR YOUR SHOW SHIRT



PONCHO



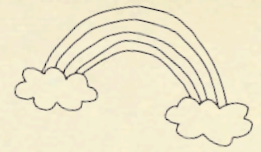
BLANKET



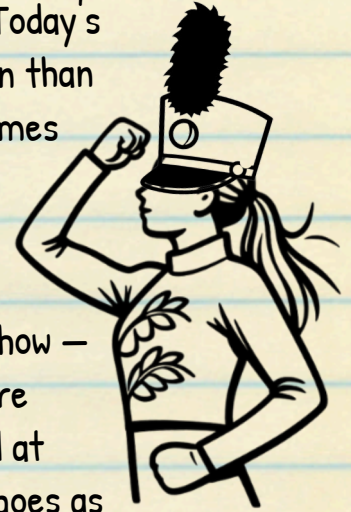
YOUR LOUDEST VOICE

# UNIFORMS

## marching uniforms



Marching band has come a long way from its military roots. Today's competitive marching band is closer to a Broadway production than a parade — original music, dramatic choreography, and costumes designed to tell a story on a football field.



Each season, Madison Central commissions custom uniforms tailored for the show and fitted to each student. This year's show — *The Two Sides of the Moon* — will be no exception. Uniforms are funded through student fees, owned by the program, and sold at season's end— so that every dollar invested in the program goes as far as it possible can.

### MUSICIANS PROVIDE

→ **Compression Gear** — black or white\*  
compression gear worn under the uniform. Changing with 200+ of your closest friends calls for a little coverage.

→ **Socks** — black or white.\* Good quality (their feet will thank you!). Have a few pair at all times— marching in wet socks sucks.

→ **Shoes** — black or white.\* We'll do an order at the beginning of the season.

\*Directors will determine whether black or white gear is appropriate once uniforms are finalized.

### GUARD PROVIDES

Color Guard costumes are designed differently from the marching uniform — compression gear isn't appropriate underneath. Guard members provide:

→ **Nude/beige/skin-colored** tights, shapewear, shoes, and gloves \*

→ **Makeup\*** — guard members wear stage makeup for performances

\*Additional requirements will be shared by the guard director as the season approaches. Watch the Band app



### UNIFORM RULES

→ No Jewelry (stud earrings are ok).

→ Hair must be uniform with the rest of band

→ No bright nail polish

→ No makeup (color guard excepted)

→ No eating in uniform

→ Only water while wearing uniforms

→ Uniforms are to be *returned* to the appropriate section rack after every performance

### PARENT TIP — SPARE BAG IN YOUR CAR

extra socks · needle & thread · scissors · safety pins · shoe polish · stain remover

Your hero moment is coming. Pack the bag.



# Student Health + Wellness



Marching band kids are the hardest-working kids you'll ever meet – heavy instruments, complex choreography, breath control, all at once in the summer heat. Taking care of their well-being isn't optional – it's part of the job. We've got your student's back. Here's things to keep in mind.

## NUTRITION

- Eat a real breakfast before rehearsal – protein and carbs, not just sugar
- Pack good snacks – nuts, fruit, granola bars, string cheese
- Avoid heavy or greasy food on rehearsal days
- Label your lunch bag – there will be a hundred just like your

## OTHER TIPS

- Wear and reapply sunscreen – heat illness is real
- Deodorant – make sure your student packs it and uses it- liberally. Reapplication at lunch is not overkill. Their section mates will thank them.
- Use a cooling towel during breaks
- Medical needs (inhaler, epi-pen)? Make sure staff have your student's medical form and emergency info on file

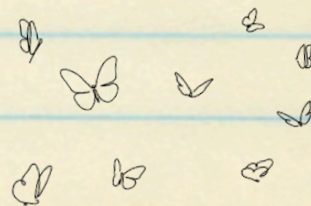
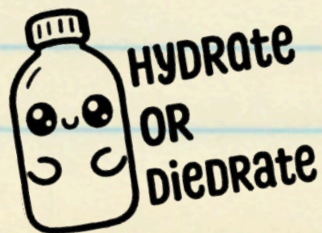
## HYDRATION

*Dehydration is the #1 reason students sit out of rehearsal.*

- At least 4 liters of water every day – not just rehearsal days
- Half-gallon or full-gallon insulated jug – small bottles won't cut it
- Set phone reminders to drink throughout the day
- Skip energy drinks and heavy caffeine during camp
- Bring Gatorade, Powerade, Liquid IV packets on long rehearsal days for electrolytes

## REST

- Aim for 8-9 hours of sleep nightly during camp
- Start adjusting sleep schedule before camp begins
- *The cumulative effect* – one bad night is survivable. A week of poor sleep during band camp compounds fast. The body doesn't just need rest the night before – it needs a consistent pattern going into camp.
- *Rest during breaks* – students should actually sit down and get off their feet during breaks, not stand around socializing. Feet and legs need recovery time during long rehearsal blocks.



# VOLUNTEER



Behind every incredible performance is an incredible team of volunteers. Meals, travel, uniforms, props, fundraising, hydration, encouragement — none of it happens without people who show up. Whether you can give one hour or one full season, your time makes a real difference.



**70**  
VOLUNTEERS NEEDED  
per competition

*That's not a wish list. That's what it takes to put this show on the field.*

*Props don't move themselves — at competitions, the field crew has minutes to get everything on and off the field. It's a choreography all its own.*

## WHERE CAN YOU HELP?

### Food + Hospitality

Feed the band on competition days and long rehearsals. Donate items, plan meals, or just show up and serve.

### Chaperones

Ride the buses, supervise students at events and competitions throughout the season.

### Health + Wellness

Keep our students safe and healthy on the field — first aid, wellness monitoring, and medical support at every event.

### Transportation, Props, & Field Crew

Build, move, and set props and pit equipment at performances. Physical work, big reward, and a front row seat for every performance!

### Uniforms

Help with fittings, repairs, washing, and keeping 200+ costumes performance-ready all season.

### Fundraising

Plan and support the events and initiatives that keep this program funded and fees as low as possible.

### Tech + Media

Photos, social media, website updates, communications. Got a special skill? Keep reading.

*\*No experience necessary. No audition required. We just need you to show up — and the kids genuinely, urgently need you.*

# GETTING INVOLVED

---



## Where to Start

Volunteering starts with raising your hand. You don't need a résumé — you just need to show up.

Here's how to get started:

- Watch posts on Facebook and the Band app for areas of need
- Visit [madisoncentralband.com/get-involved/volunteer](http://madisoncentralband.com/get-involved/volunteer)
- Introduce yourself to any booster officer at an event and let them know where you can help
- Email [ask@madisoncentralband.com](mailto:ask@madisoncentralband.com) and they'll connect you with the committee lead

## What to Expect

- **Competition days are long — plan to stay for the full day unless otherwise noted**
  - Can you weld? Or into woodworking? How about painting? Skills at all levels are appreciated with the **Props team!**
  - **Field Crew** roles require physical ability — pushing props (sometimes long distances, up and down hills)- and on and off the field in under 10 minutes
  - **Food committee** volunteers help plan, prep, and serve meals for 200+ students and staff- and clean up afterwards
  - **Chaperones** tag along everywhere the kids go and keep shenanigans to a minimum
  - The **Uniform Team** takes home uniforms and washes them appropriately- uniforms are often delicate and need special attention. These are the unsung heroes of the booster org!
  - Or maybe you can help with **Fundraising!** We always need bodies to work EKV concessions- and the majority of the games are not during marching season. Or perhaps you have connections with businesses to promote sponsorships or the I'm With the Band program.

### Got a Skill? We Just Might Need It.

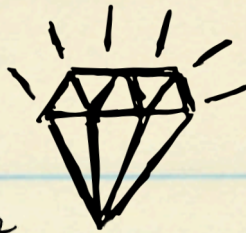
Photography. Graphic design. Woodworking. Cooking. Social Media. Sewing. Web design. Event planning. Grant writing. Maybe you have the next great fundraising idea! If you're good at something and willing to share it, this program has probably needed it at some point — and might need it right now.

*Don't wait to be asked. Tell us what you bring to the table.*

*Reach out to any booster officer or email [ask@madisoncentralband.com](mailto:ask@madisoncentralband.com) and introduce yourself.*

————— It takes a village. Be part of ours. —————

# FUNDRAISING



## Annual Fundraisers

### ANNUAL COMMUNITY SHOW

The band performs for its home crowd before the season begins. Show shirt unveiled, food trucks, and the very first public run of this year's show. The performance won't be perfect yet – that's the point. Come see where it starts, so you can marvel at where it ends.

### EKU CONCESSIONS *our largest + most consistent fundraiser*

We work concessions at Eastern Kentucky University's home football and basketball games, as well as a few special events. Many hands make light work – and it's a great time (and free food!). This runs from September – April and never interferes with marching band!

### DINING FOR DOLLARS

We partner with local restaurants throughout the year. Dine on a designated night and a portion of proceeds comes back to the band. Easy and delicious. Watch the Band app for upcoming dates.

### SILENT AUCTION

A newer tradition – a silent auction featuring donated items from local businesses and supporters. A fun morning that's one of our most community-centered events.

### KENTUCKY DERBY *Be a part of history!*

For two days in May, we head to Louisville to work the Kentucky Derby as food runners. A long, high-energy weekend – at one of Kentucky's biggest traditions.

### AND MORE!

NO FRUIT.  
NO COOKIE DOUGH.  
NO OVERPRICED JUNK.

Instead, we work together on events and programs that support and connects with our community. Every dollar goes straight back to the students.



Fundraising events are also where band parents become band family. Come for the cause – stay for the people

# Easy Ways to Give Back



*No sweat required!*

## **I'M WITH THE BAND**

A community partnership where local businesses donate a flat rate or percentage of sales to the MCHS Band. When you shop at a participating business and say "I'm with the band" at checkout, a portion of your purchase goes directly to supporting our students.

<https://madisoncentralband.com/get-involved/iwtb/>



## **RAISERIGHT <sup>NEW!</sup>**

Buy gift cards for places you already shop — groceries, gas, restaurants — and a percentage comes straight back to the band. Give back by buying what you were already going to buy.

<https://www.raiseright.com/enroll> and use code **MLX3MV3EGDXX**

## **SNAP RAISE**

Simple, safe, and effective. Connects our band directly with supporters so we can hit our goals without selling a thing.

## **KROGER COMMUNITY REWARDS**

Link your Kroger Plus Card and Kroger donates a portion of your purchases automatically.

Search "Madison Central Band Boosters, Inc." or code **DS231**  
[kroger.com/i/community/community-rewards](https://www.kroger.com/i/community/community-rewards)

## **WALMART ROUND UP**

Round up your purchase at checkout and donate the change. Costs you pennies at a time.

[walmart.com/nonprofits](https://www.walmart.com/nonprofits) — search **MCHS Band Boosters, Inc.**

## **EMPLOYER MATCHING**

Many employers match charitable donations to 501(c)(3) nonprofits. Check with your HR department — you may already have a way to double your impact at no extra cost.

## **WHERE THE MONEY GOES**

Every dollar raised goes straight back to the students — uniforms, equipment, travel, meals, and keeping fees as low as possible.



**#FORTHEKIDS**

# BAND GLOSSARY

## LEARN THE LINGO

*You're going to be hearing a lot of new words around the dinner table.*

### MCHS-specific Terms

**BAND DOOR** - The back door of the MCHS nearest the band room; located on the right side of the school near a long ramp.

**HEALTH LOBBY** - Large open lobby just inside the main rear entrance near the rear parking lot.

**"MCx"** - "MC1," "MC2," "MC3," etc. A full run-through of the complete show, treated as a performance. MCx is called by a senior-led call and response - a tradition that signals to the band that this one counts. For the students, MCx isn't a rehearsal. It's a moment.

**PURPLE LOT** - Also called Practice Lot or Band Lot. This is the parking lot across 2nd street where the band practices. Dropoff and pickup are via the Daniel Boone Elem. entrance.

**TOMAHAWK WALK** - A pregame tradition where the football team walks through a gauntlet of cheering fans on their way into the stadium. The band lines the route, playing and performing as the team passes. Come early, find a spot, and be loud.

**THE TOWER** - A permanent elevated tower at the Purple Lot. Directors use it to observe and instruct the full ensemble from above - the only way to truly see the drill taking shape. The tower is adorned with sponsor signage, a visible reminder of the community that supports this program. You'll usually find Booster Officers congregating near the tower during rehearsals.

**THE WAREHOUSE** - Part storage/part workshop. Located near the rear of Purple Lot.

### Uniforms & Equipment

**BIBBERS** - Black overall-style pants worn under the uniform jacket

**PODIUM** - a raised, portable platform used by drum majors to conduct and visually command the ensemble on the field

**PLUME** - Decorative feather that attaches to the shako

**SHAKO** - The formal marching hat



## Marching & Performance Terms

**8 TO 5** - The standard marching step: 8 steps per 5 yards. You'll hear this constantly.

**DOT** - A marcher's exact coordinate on the field, defined by a yard line and a distance from the sideline or hash marks. Every marcher has a dot for every moment of the show. The arrangement of all dots at a given moment is a Set.

**GUSH + GO** - is a quick water break. Also called a "sip and dip" or "splash and dash"

**JAZZ RUN** - technique used to cover long distances quickly without breaking tempo or sacrificing posture

**PARK + BARK** - a strategy where musicians stand still so they can focus entirely on playing as loudly and powerfully as possible, rather than executing complex marching drill while playing

## People & Sections

**AUXILIARY** - Also called Color Guard. The term originally used for the flag/rifle/saber carriers who stood at the front of marching show. Evolved into modern Color Guard when dance and decorative flags were added.

**ADJUDICATORS** - Also called judges; provide evaluation and feedback for a performance

**BATTERY** - Percussionists that carry drums while marching. Comprised of snare drums, bass drums, and quads. Spots are earned through audition

**DRUMLINE** - The entire percussion section (Battery and Front Ensemble)

**FRONT ENSEMBLE / PIT** - Stationary percussion at the front of the field - xylophone, marimba, synthesizers, etc

**PEP BAND** - band that plays from the stands or sidelines during athletic events

## Organizations & Competitions

**BOA** - Kentucky Music Educators Association - governs band assessments and All-State competitions.

**CLASS (1A, 2A, ETC)** - Kentucky Music Educators Association - governs band assessments and All-State competitions.

**DCI** - Drum Corps International - a governing body for competitive drum and bugle corps that is often referred to as "marching music's major league"

**KMEA** - Kentucky Music Educators Association - governs band assessments and All-State competitions in Kentucky.

**WGI** - Winter Guard International - the governing body and competition circuit for indoor color guard and indoor percussion.

# QUICK REFERENCE

everything you need,  
right here on the  
back cover

## KEY CONTACTS

---

### GENERAL QUESTIONS

[ask@madisoncentralband.com](mailto:ask@madisoncentralband.com)

### PRESIDENT

Julie Harper

[president@madisoncentralband.com](mailto:president@madisoncentralband.com)

### VICE PRESIDENT

Jessica Smith

[vicepresident@madisoncentralband.com](mailto:vicepresident@madisoncentralband.com)

### SECRETARY

Michelle Stubbs

[secretary@madisoncentralband.com](mailto:secretary@madisoncentralband.com)

### TREASURER

Melissa Herman

[treasurer@madisoncentralband.com](mailto:treasurer@madisoncentralband.com)

### UNIFORMS

[uniforms@madisoncentralband.com](mailto:uniforms@madisoncentralband.com)

### CHAPERONES

[chaperones@madisoncentralband.com](mailto:chaperones@madisoncentralband.com)

### HEALTH + WELLNESS

[wellness@madisoncentralband.com](mailto:wellness@madisoncentralband.com)

### FUNDRAISING

[fundraising@madisoncentralband.com](mailto:fundraising@madisoncentralband.com)

### FEED THE BAND

[feedtheband@madisoncentralband.com](mailto:feedtheband@madisoncentralband.com)

### SOCIAL MEDIA / PHOTOS

[socialmedia@madisoncentralband.com](mailto:socialmedia@madisoncentralband.com)

### WEBSITE + TECHNICAL ISSUES

[support@madisoncentralband.com](mailto:support@madisoncentralband.com)

## KEY LINKS

---

### WEBSITE

[madisoncentralband.com](http://madisoncentralband.com)

### BAND APP

[band.us](http://band.us) · Search: MCHS Band Parents

### PRESTO

[app.presto-assistant.com](http://app.presto-assistant.com)

### FACEBOOK

[@mcindianband](https://www.facebook.com/mcindianband)

### INSTAGRAM

[@mcindianband](https://www.instagram.com/mcindianband)

### CALENDAR

[madisoncentralband.com/families/calendar](http://madisoncentralband.com/families/calendar)

### USEFUL FORMS

[madisoncentralband.com/families/useful-forms](http://madisoncentralband.com/families/useful-forms)

## WELCOME TO THE MADISON CENTRAL BAND FAMILY.

You're going to love watching your student grow — as a musician, as a performer, and as a person.

★ We're glad you're here. ★

---

MADISON CENTRAL BAND BOOSTERS · A 501(C)(3) NONPROFIT ORGANIZATION  
PO Box 616, Richmond, KY 40476 · [ask@madisoncentralband.com](mailto:ask@madisoncentralband.com) · [madisoncentralband.com](http://madisoncentralband.com)

ONE BAND. ONE FAMILY.